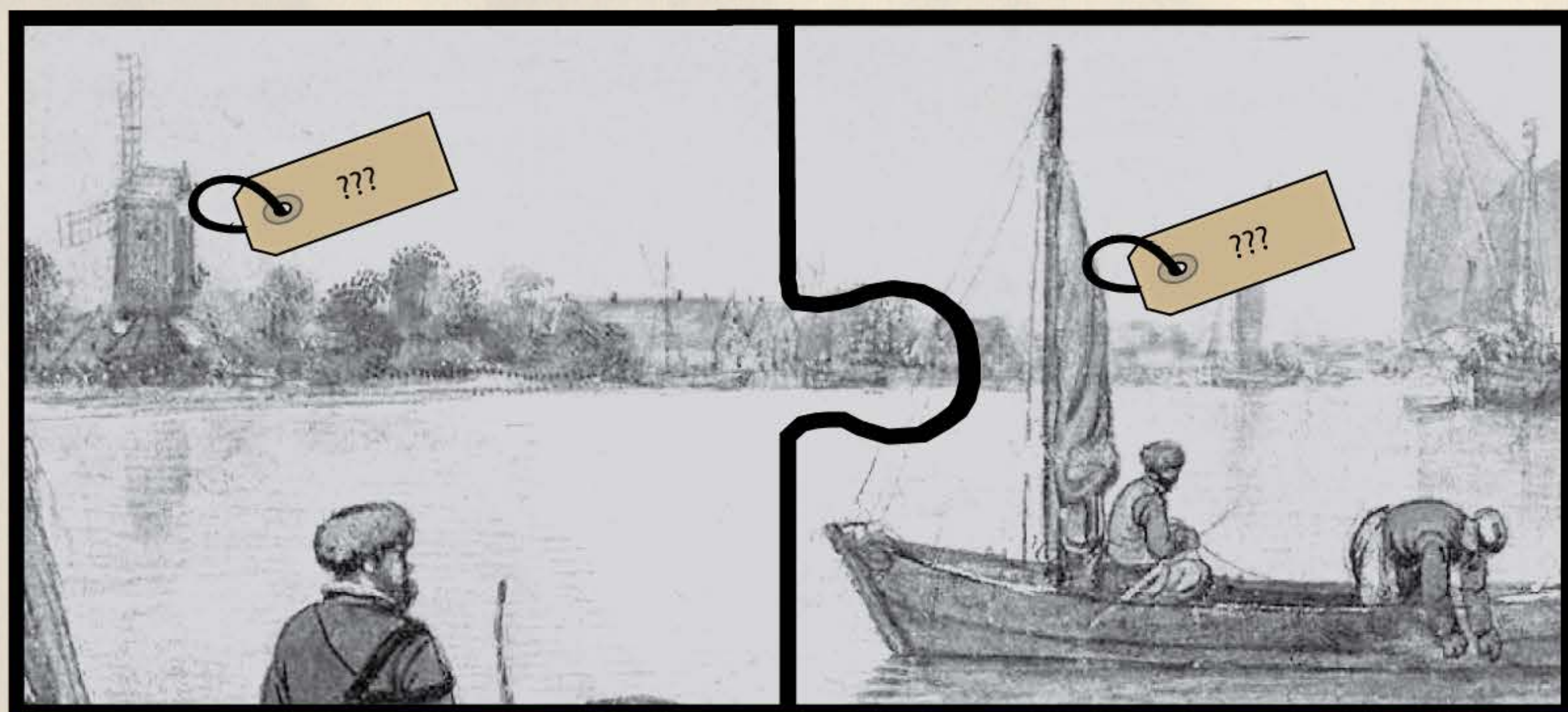


ACCURATOR

NICHESOURCING SPECIFIC KNOWLEDGE FOR CULTURAL HERITAGE INSTITUTIONS

The goal of Accurator is to support the annotation process of external annotators to enrich the collection of the Rijksmuseum Amsterdam.

Artwork with missing annotations



Step1: Identify (part of) prints for annotation from Rijksmuseum collection

WP6. What are the characteristics of prints that need more/detailed annotations?

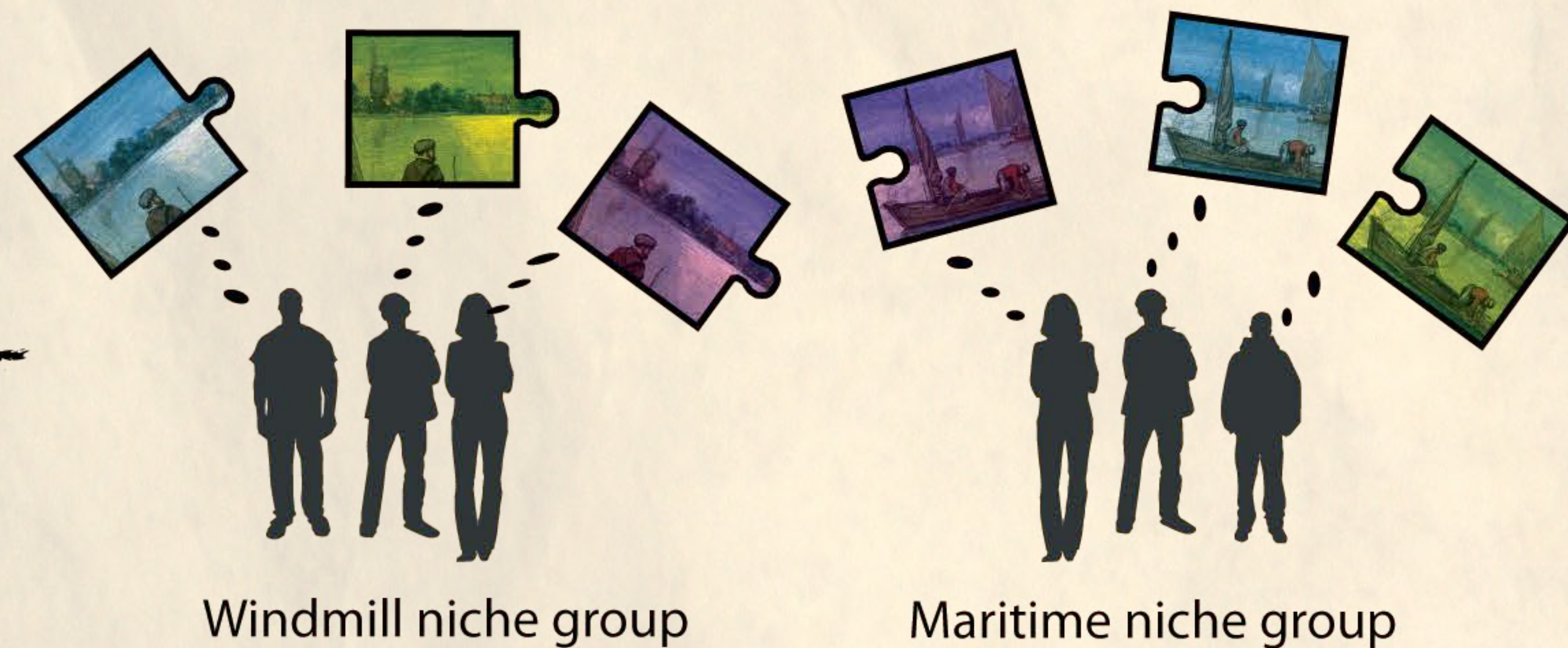
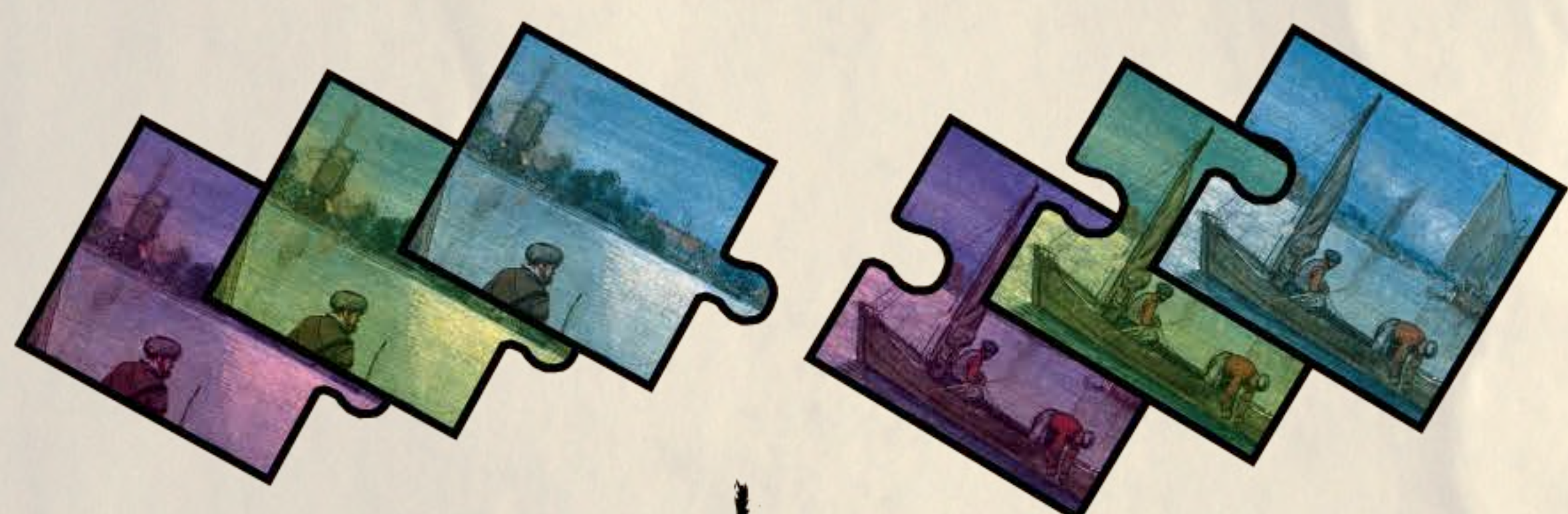
WP5. How can we determine that a person is part of a niche group?



Step2: Assign these to appropriate niche groups

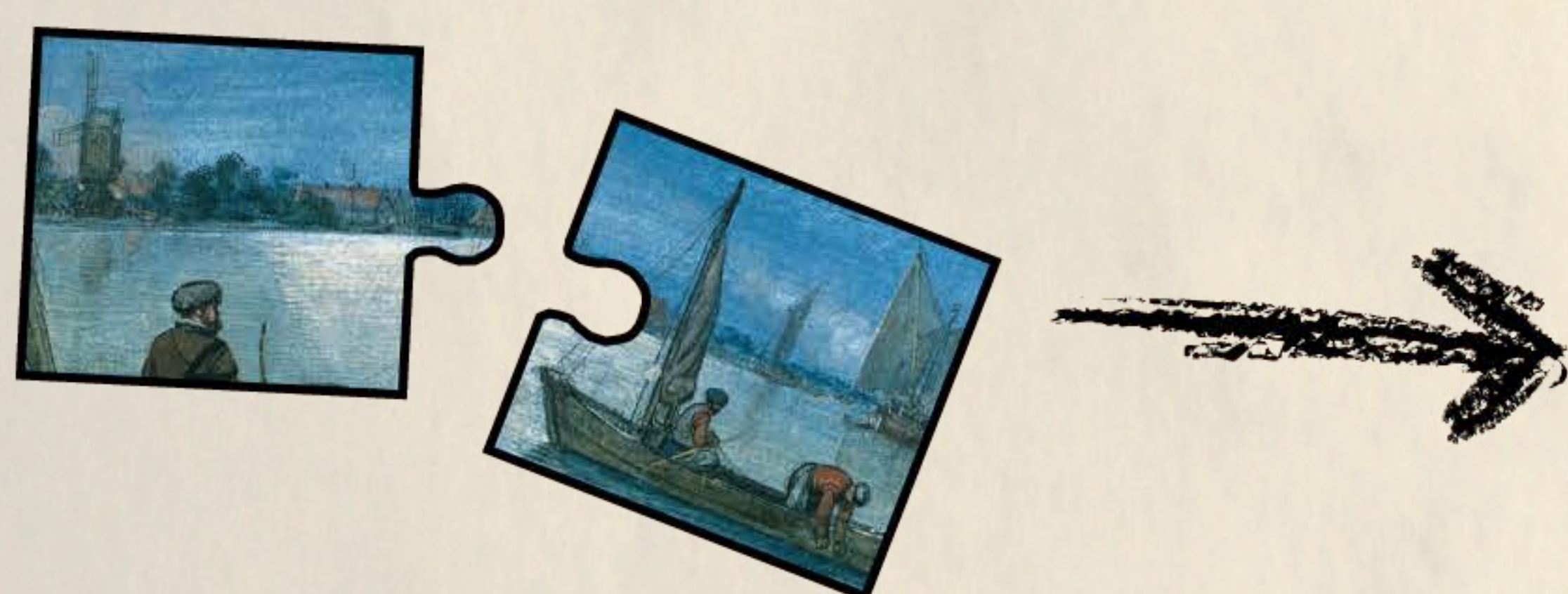
WP7. What kind of interface elements support creation of qualitative annotations?

Step3: Gather annotations from persons in the niche groups



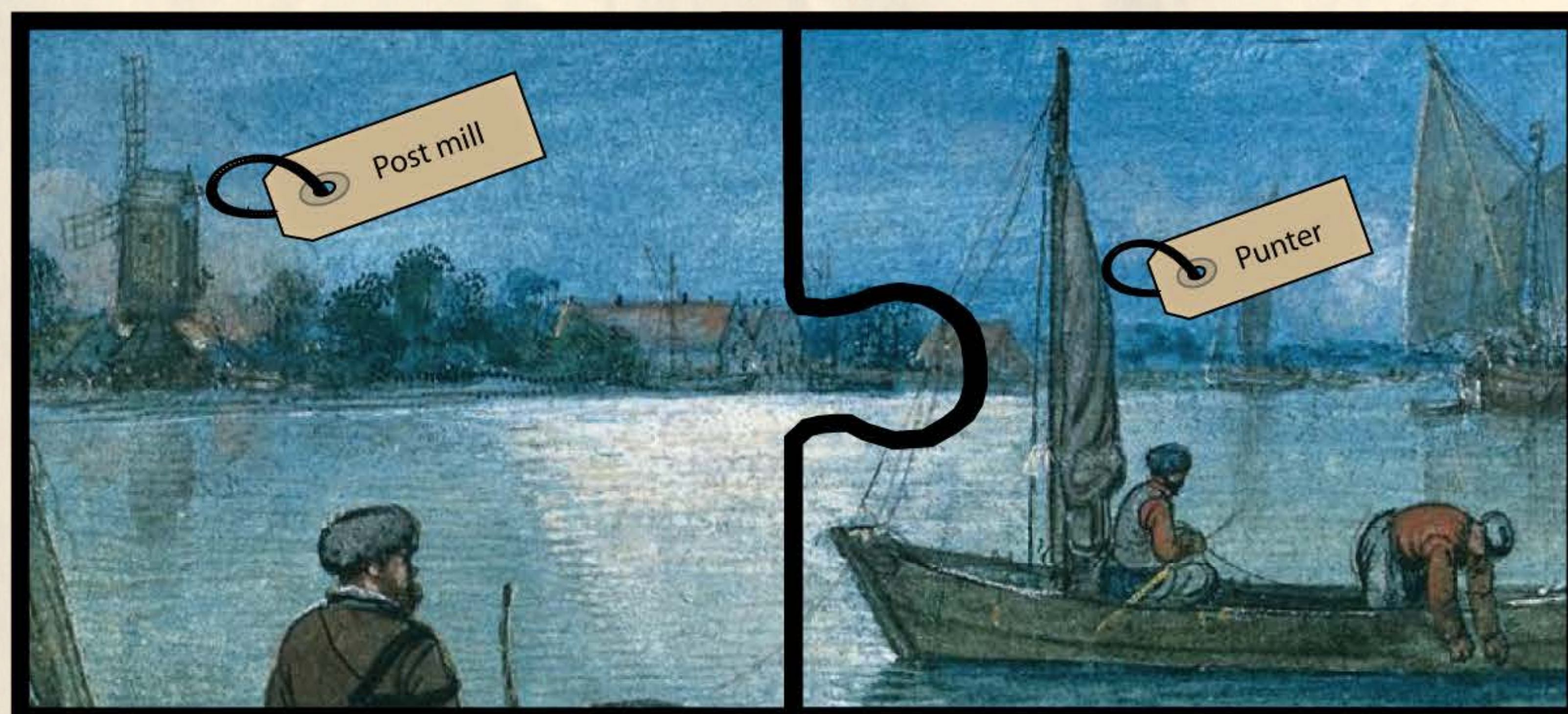
Niche group. A group of persons outside the institution with common interest in one or multiple topics, are knowledgeable and are motivated to perform tasks related to those topics.

Step4: Rate the quality of annotations and select the most complete and accurate annotations



WP8. How can we determine the trustworthiness and quality of annotations?

Artwork with complete annotations



RIJKS MUSEUM

TU Delft
Delft University of Technology

VU UNIVERSITY AMSTERDAM

CWI

SEALINC Media

Jasper Oosterman (WP5)
Chris Dijkshoorn (WP6)
Mieke H. R. Leyssen (WP7)
Myriam C. Traub (WP7)
Archana Nottamkandath (WP8)



This publication was supported by the Dutch national program COMMIT.

COMMIT/

<http://sealincmedia.wordpress.com>